

Welcome

Town of East Greenbush / Town of North Greenbush / CDTC
US Route 4 Corridor Study
Public Meeting #1
Monday, March 27, 2023 6:30pm



Agenda

- 1. Welcome and Introductions**
- 2. Project and Schedule Overview**
- 3. Existing Conditions Overview**
- 4. Mini-Visioning Session**
- 5. Next Steps**



Introductions

Project Sponsors

Town of East Greenbush / Town of North Greenbush / CDTC

Grant Program

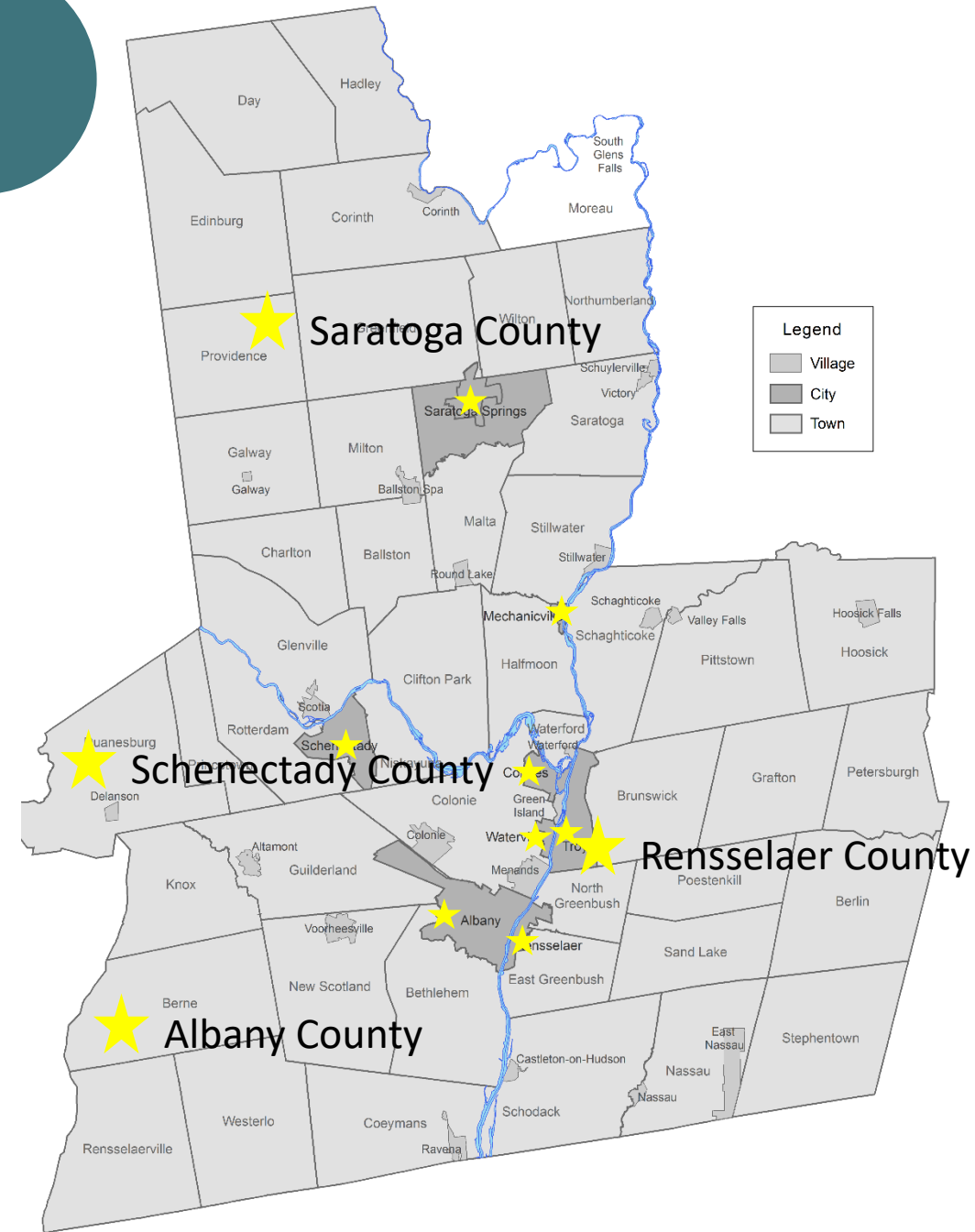
Community and Transportation Linkage Program (CDTC)

Consultant

MJ Engineering & Land Surveying, P.C.



- Metropolitan Planning Organization (MPO)
 - A transportation policy-making and planning organization
 - Allocates federal transportation funding resources
- Members include:



Introductions

Study Advisory Committee (SAC)

Anna Feltham (Town of East Greenbush)

Dan Fiacco (Town of East Greenbush)

Colleen Lallier (Town of East Greenbush)

Joe Bott (Town of North Greenbush)

Michael Chaires (Town of North Greenbush)

Linda VonDerHeide (Rensselaer County)

Mark Saunders (NYSDOT Rens. Co Residency)

Brian Kirch (NYSDOT Region 1)

Chris Bauer (CDTC)

Chaim Simon (CDTC)

Ethan Warren (CDTA)



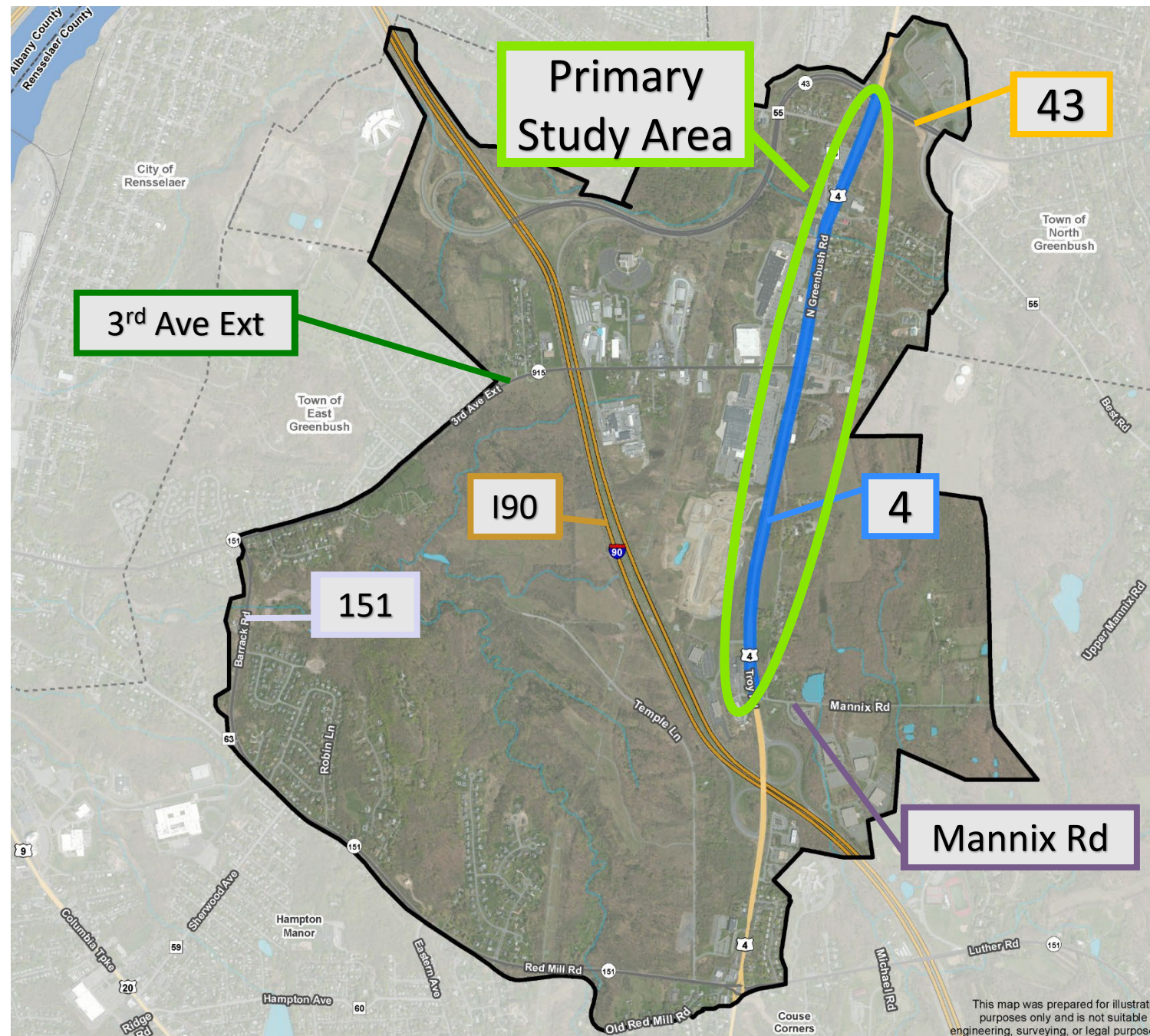
Study Area

The primary study area is the US Route 4 Corridor, from Mannix Rd in the Town of East Greenbush, to NY 43 in the Town of North Greenbush.

LEGEND

- Primary Study Area
- Secondary Study Area
- County Boundary
- City/Town Boundary
- Railroad
- Interstates
- US Routes
- State Routes
- County Routes
- Water Body
- River/Stream

Areas of Interest	Estimated Acreage
Primary Study Area	32.95
Secondary Study Area	2410.38



This map was prepared for illustrative purposes only and is not suitable for engineering, surveying, or legal purposes.

Study Area

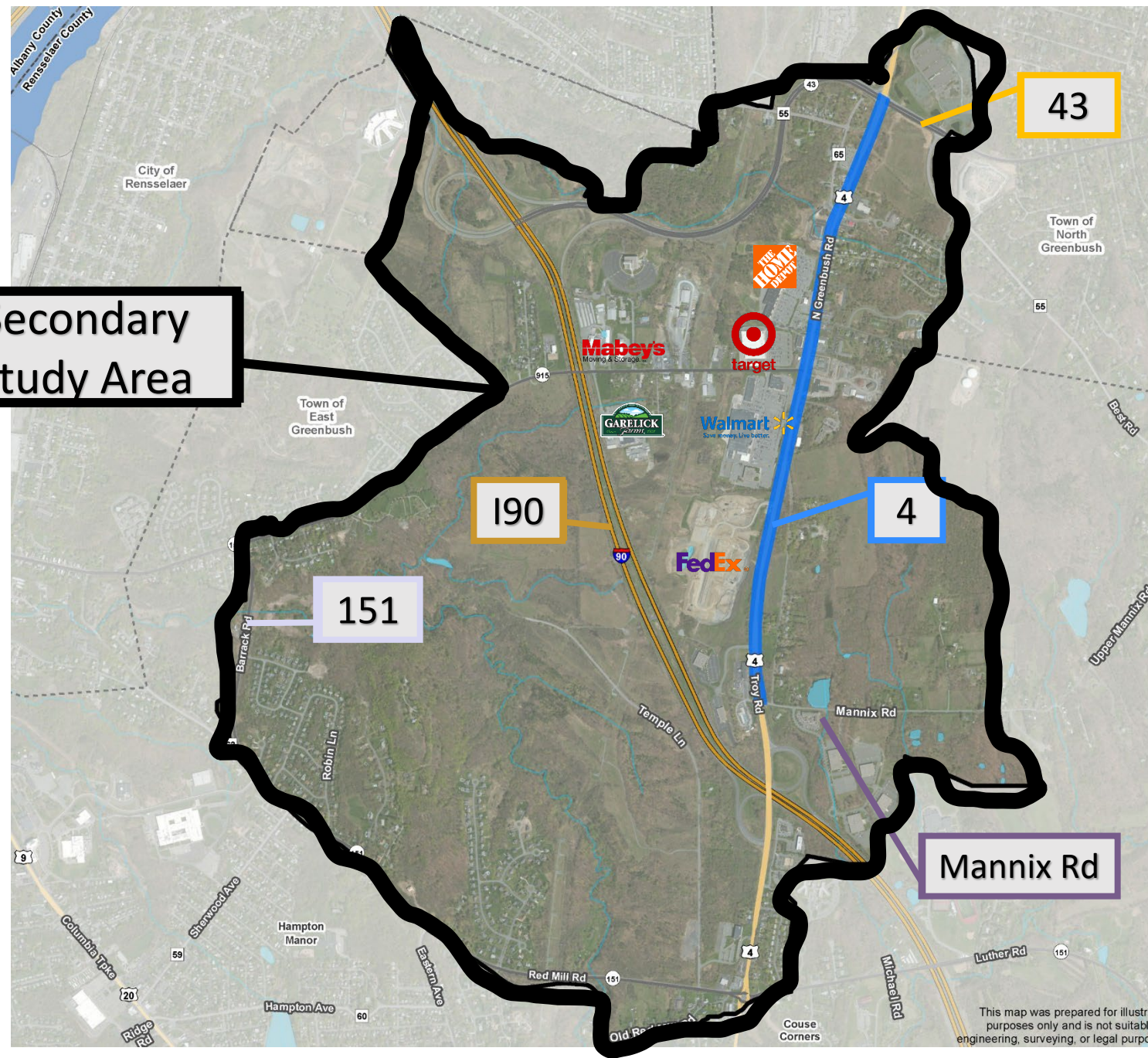
The secondary study area is the larger area of consideration and includes the areas where the impacts of current and future land uses will be evaluated.

LEGEND

- Primary Study Area
- Secondary Study Area
- County Boundary
- City/Town Boundary
- Railroad
- Interstates
- US Routes
- State Routes
- County Routes
- Water Body
- River/Stream

Areas of Interest	Estimated Acreage
Primary Study Area	32.95
Secondary Study Area	2410.38

Secondary Study Area



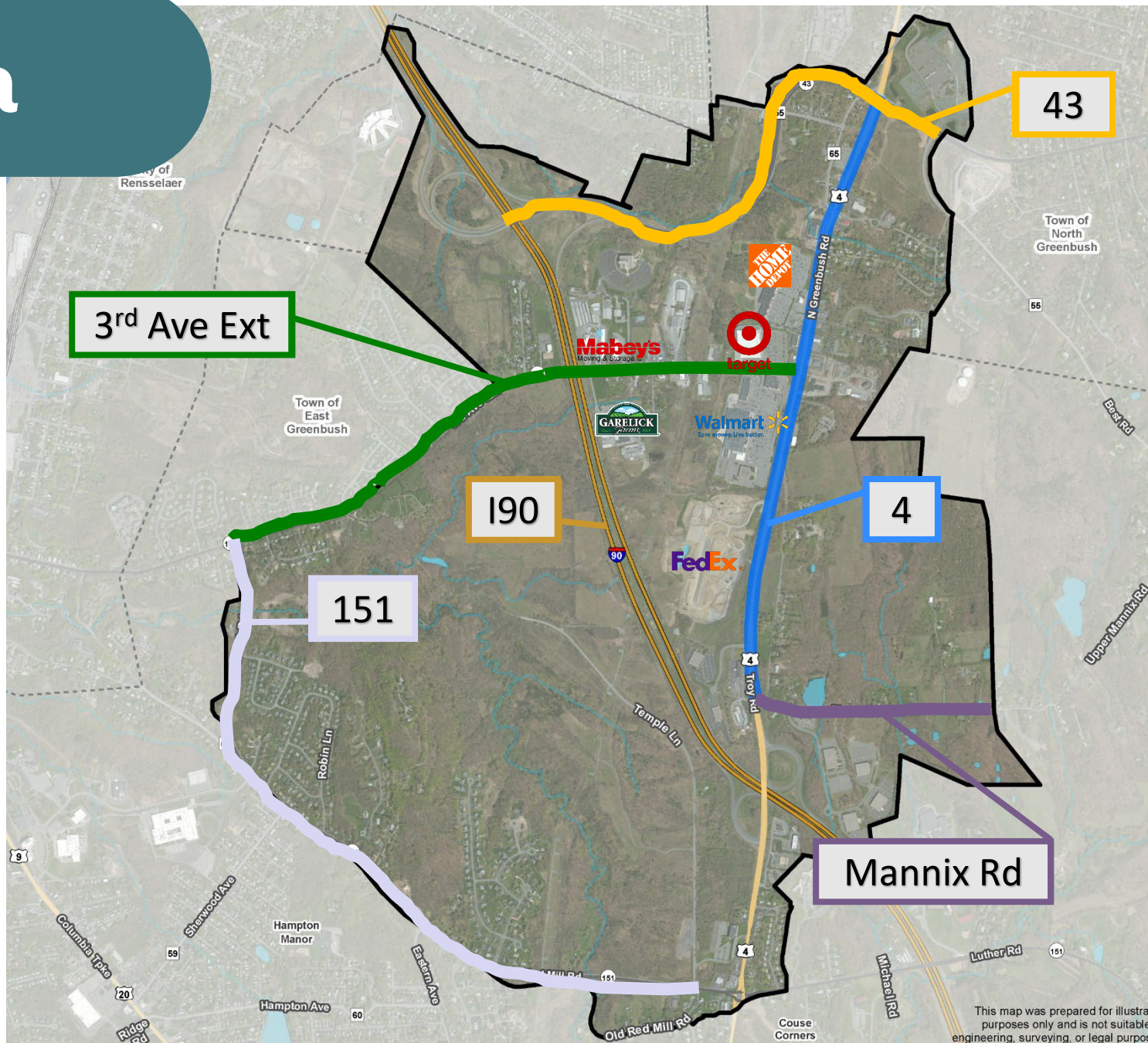
This map was prepared for illustrative purposes only and is not suitable for engineering, surveying, or legal purposes.

Study Area

LEGEND

- Primary Study Area
- Secondary Study Area
- County Boundary
- City/Town Boundary
- Railroad
- ~ Interstates
- ~ US Routes
- ~ State Routes
- ~ County Routes
- Water Body
- ~ River/Stream

Areas of Interest	Estimated Acreage
Primary Study Area	32.95
Secondary Study Area	2410.38



This map was prepared for illustrative purposes only and is not suitable for engineering, surveying, or legal purposes.

[Getting to know **you!**]

- Go to pollev.com/mjplanning518
or
- Text **MJPlanning518** to **37607**
or
- Scan the QR code with a smart device



What brings you to the study area?

Live here

Shopping

Work

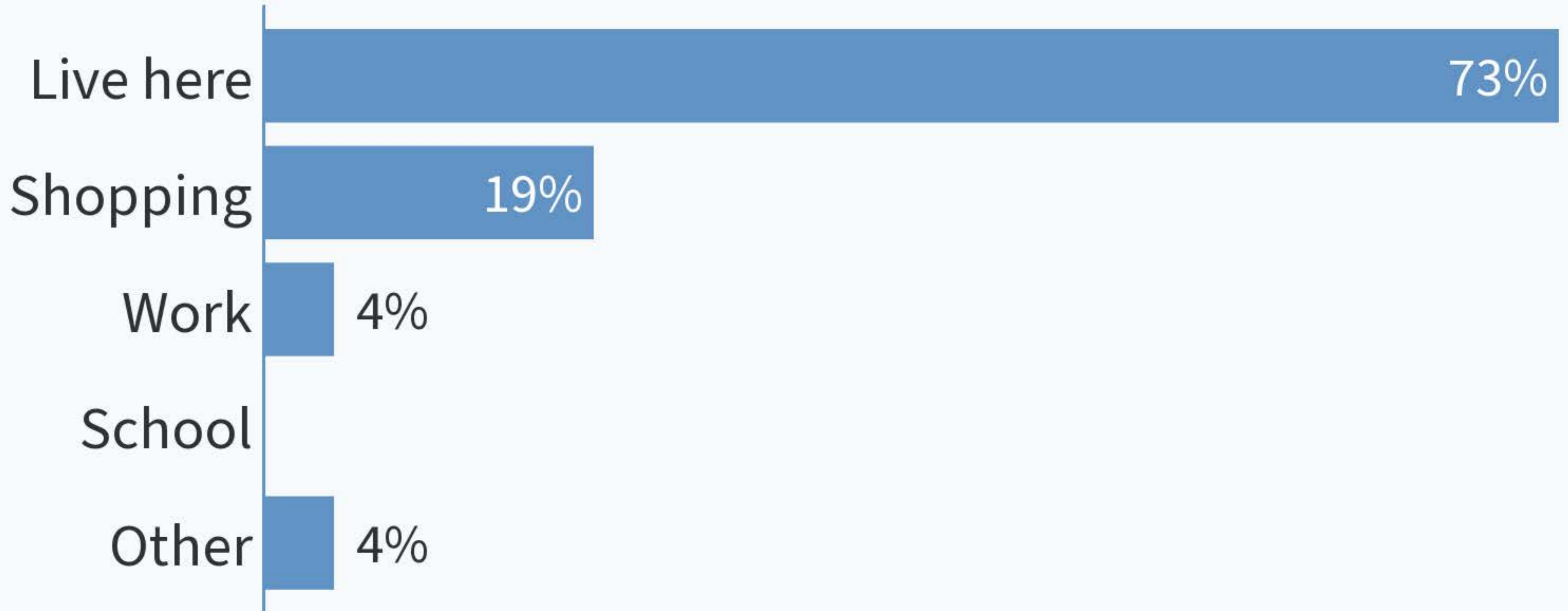
School

Other

🌐 When poll is active, respond at pollev.com/mjplanning518

📱 Text **MJPLANNING518** to **37607** once to join

What brings you to the study area?



How often do you visit the study area?

Daily

Weekly

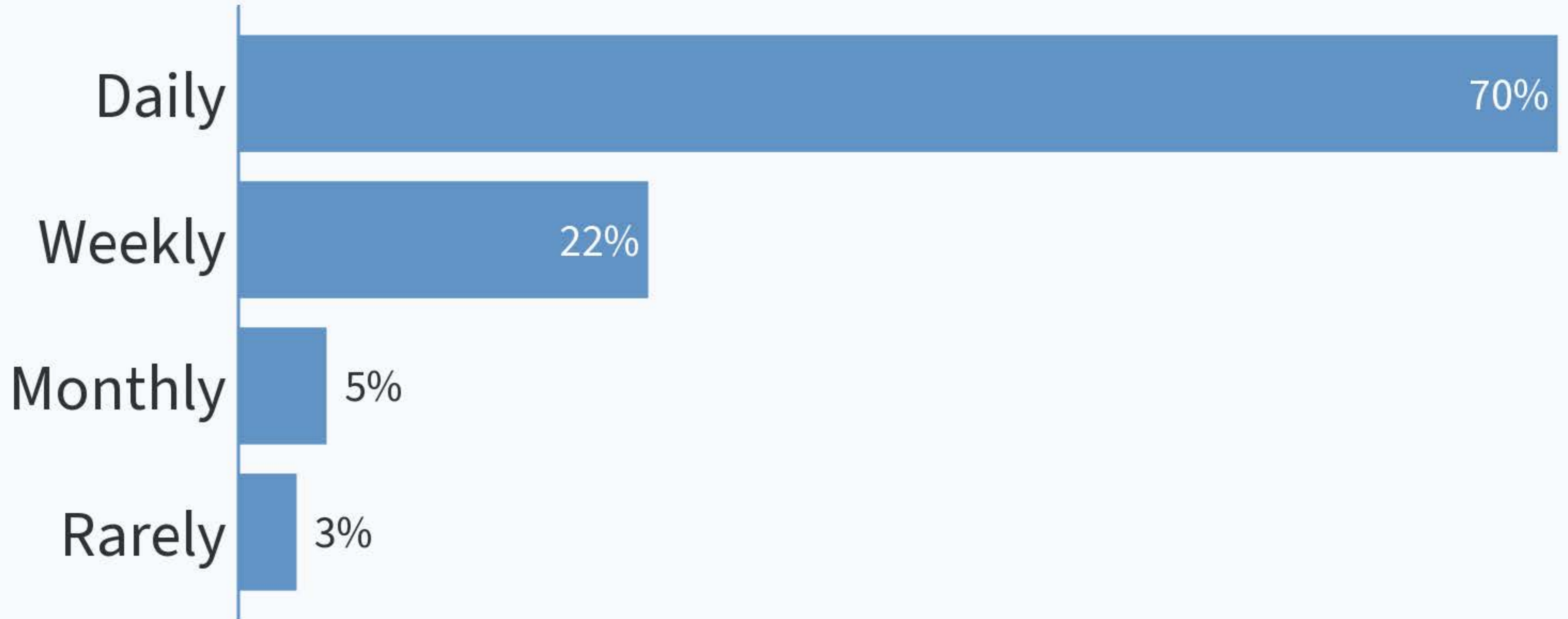
Monthly

Rarely

🌐 When poll is active, respond at pollev.com/mjplanning518

📱 Text **MJPLANNING518** to **37607** once to join

How often do you visit the study area?



How far do you travel to reach Route 4?

Less than 5 minutes

5-10 minutes

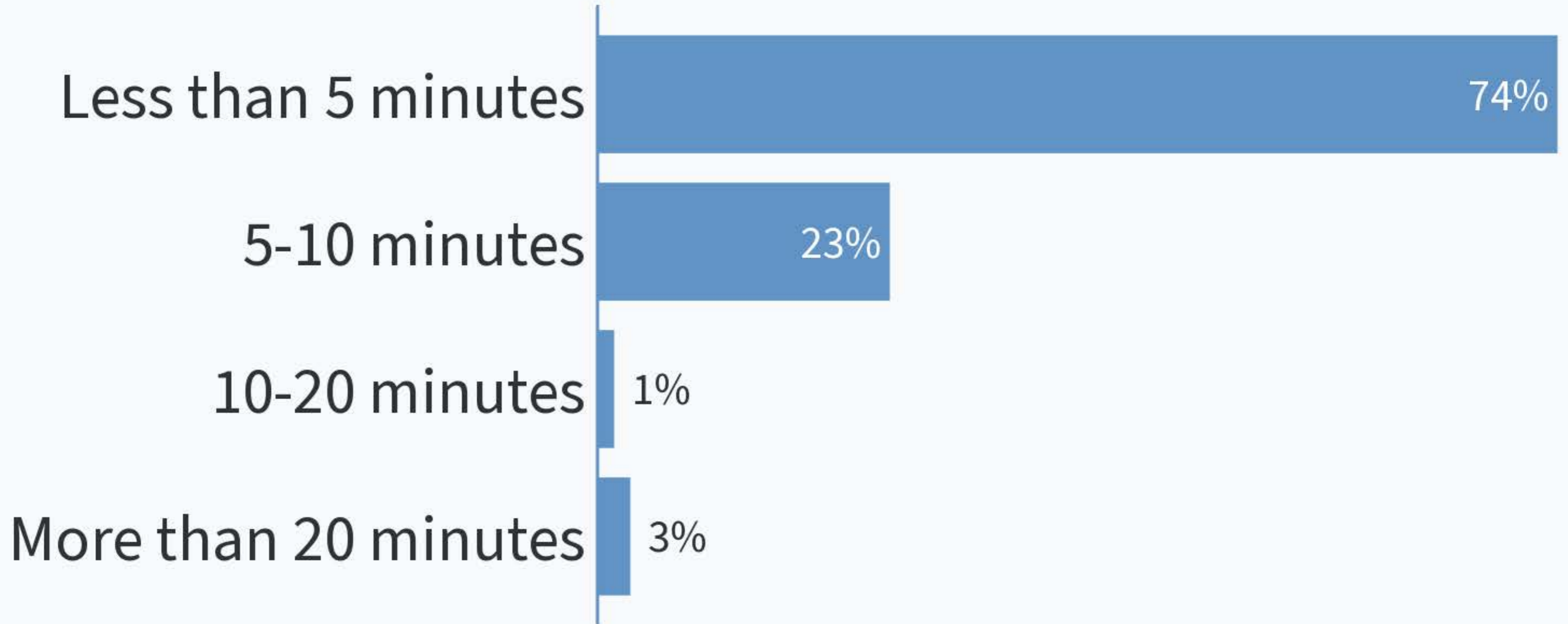
10-20 minutes

More than 20 minutes

🌐 When poll is active, respond at pollev.com/mjplanning518

📱 Text **MJPLANNING518** to **37607** once to join

How far do you travel to reach Route 4?



Agenda

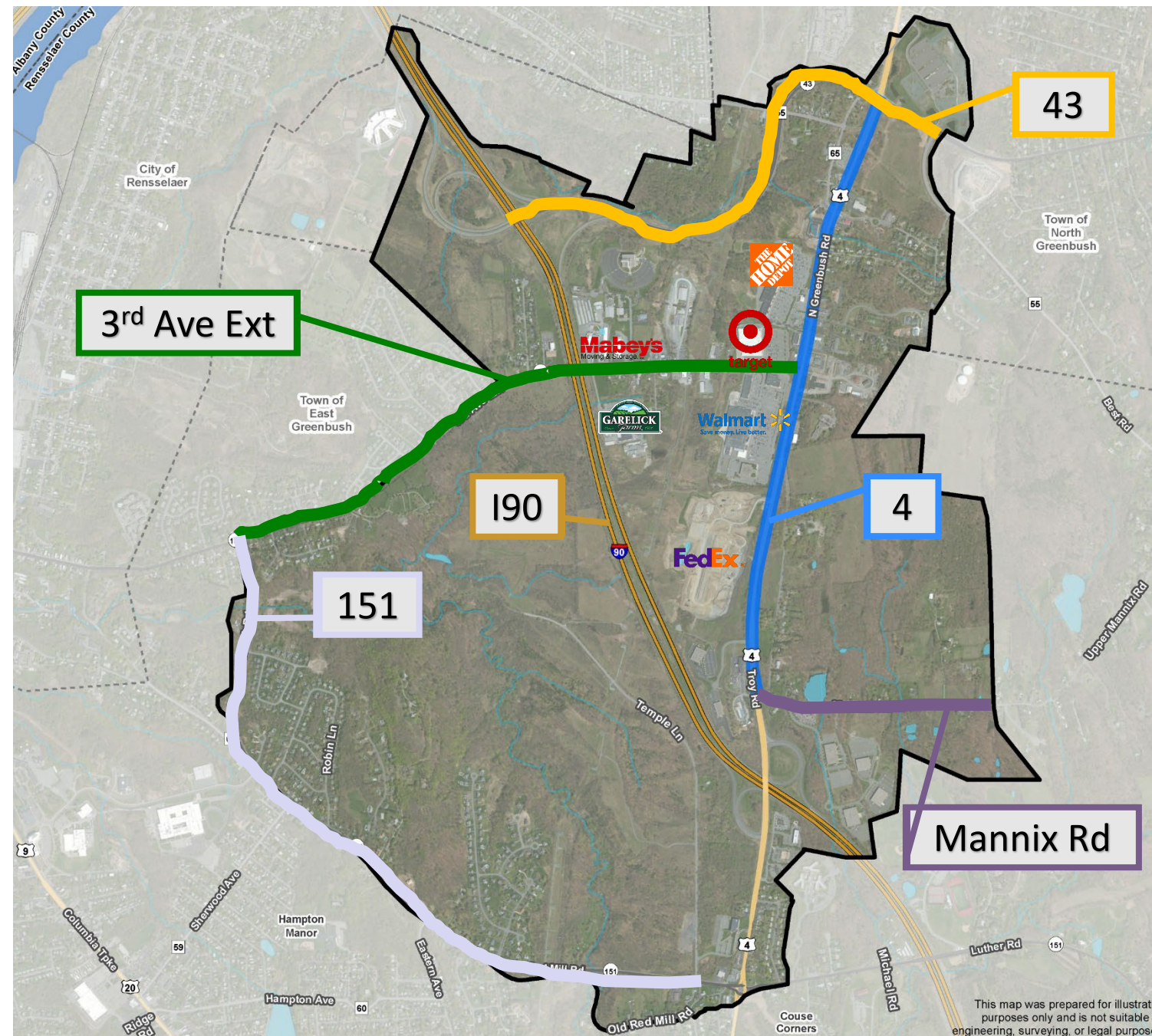
- 1. Welcome and Introductions**
- 2. Project and Schedule Overview**
- 3. Existing Conditions Overview**
- 4. Mini-Visioning Session**
- 5. Next Steps**



Study Area

The **primary study area** is the US Route 4 Corridor, from Mannix Rd to NY 43, in the Town of East Greenbush and the Town of North Greenbush and the surrounding land uses.

The **secondary study area** is the larger area of consideration and includes the areas where the impacts of current and future land uses will be evaluated.



Project Area Overview

- US Route 4 is a key corridor with a variety of large-scale commercial and retail establishments in the Town of East Greenbush and the Town of North Greenbush
- In 2006, the Town of East Greenbush and CDTC completed the Route 4 Corridor Study, a Linkage Study
- US Route 4 is owned and operated by the New York State Department of Transportation (NYSDOT)
- Coordination with NYSDOT will be critical throughout the entire process



Project Overview: Objectives

Study Objectives

- Address current traffic operational deficiencies
- Identify improvements needed to accommodate future anticipated growth
- Make recommendations to improve the transportation systems along the corridor
- Examine alternative corridor profiles and develop a preferred Corridor Concept Plan for the US Route 4



Study Overview: Objectives

Study Objectives

- Assist the Towns to pursue goals of enhancing the US Route 4 corridor
 - Improve mobility
 - Reduce traffic congestion
 - Promote economic development
 - Improve safety
 - Create a connected and integrated multi-modal transportation network

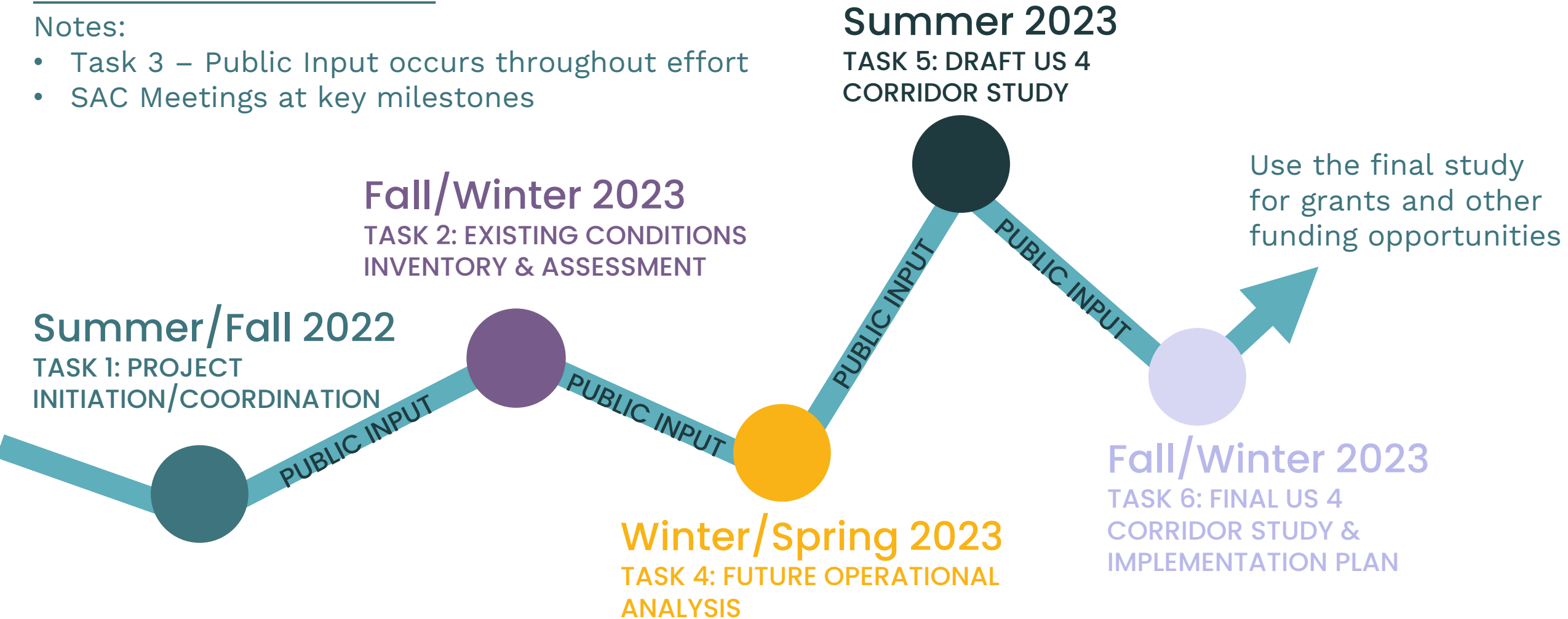


Project Schedule & Scope

KEY MILESTONES:

Notes:

- Task 3 – Public Input occurs throughout effort
- SAC Meetings at key milestones



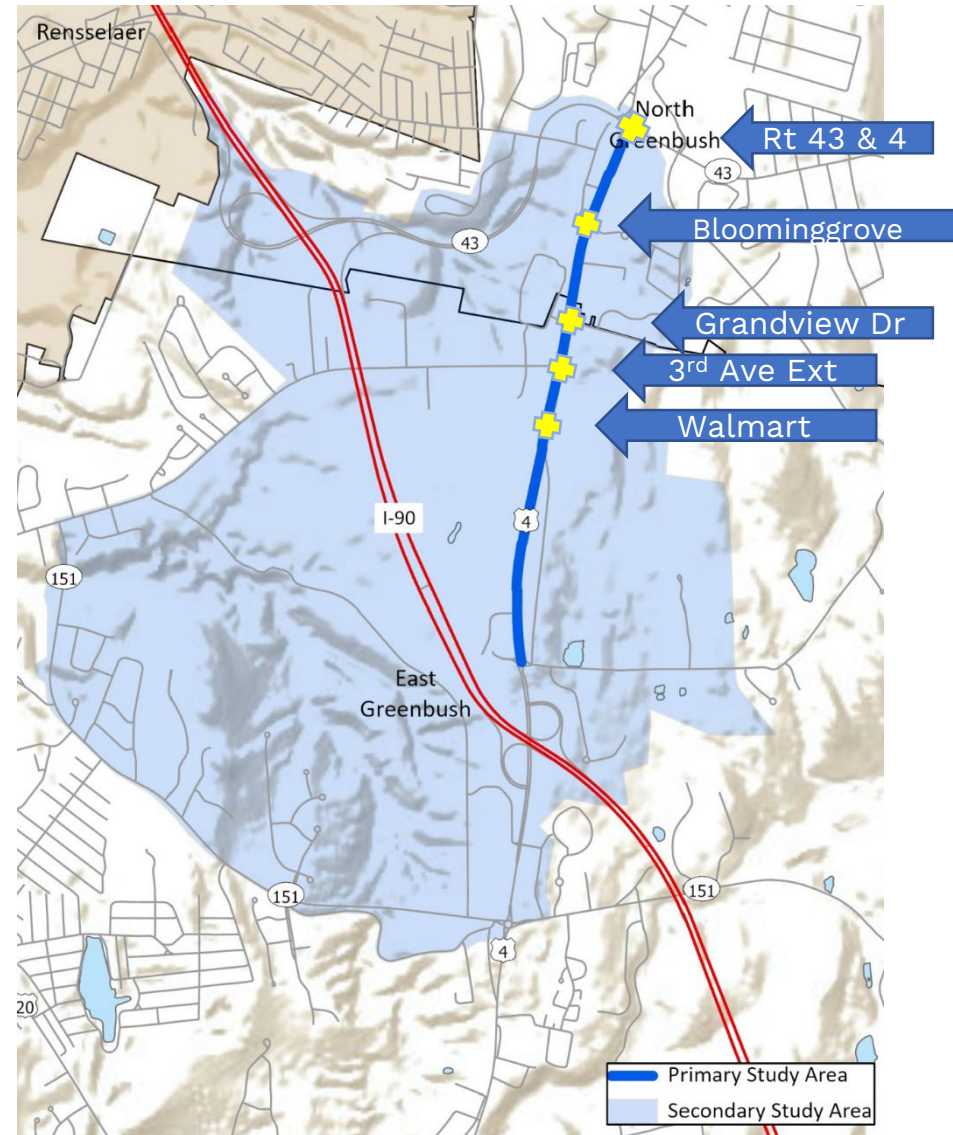
Tasks Initiated / In Progress

- Establishment of SAC
 - Kick off Meeting
 - Field walk (October 26, 2022)
- Draft Existing Conditions Memo
- Project Website (www.nyroute4study.com)
- Community Survey
 - Live since February 5, 2023
 - Over 700 responses (as of 3/27)



Tasks Initiated / In Progress

- Turning movement counts conducted
 - May 24, 2022
 - June 1, 2022
 - 5 Intersections
 - Collected Turning Movements, Pedestrian Movements & Traffic Signal Timing
- Existing data collection
 - Relevant studies or reports
 - GIS mapping data
 - Traffic data



Agenda

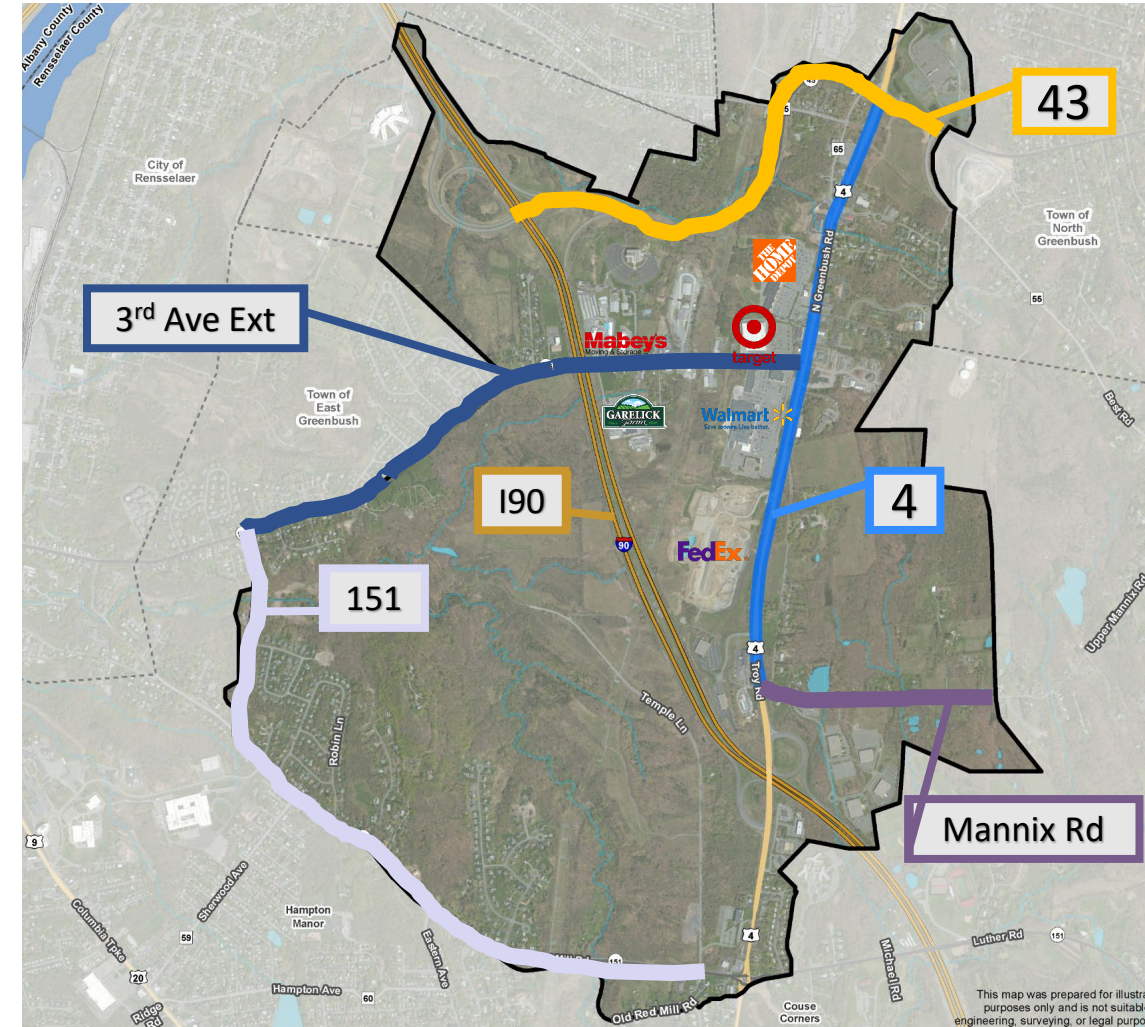
- 1. Welcome and Introductions**
- 2. Project and Schedule Overview**
- 3. Existing Conditions Overview**
- 4. Mini-Visioning Session**
- 5. Next Steps**



Existing Conditions Overview

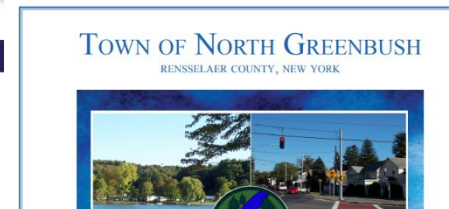
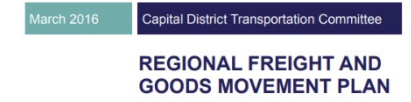
Introduction/Background

- Identifies the Study Area
- Previous Plans/Relevant Documents
- Highlights of Existing Conditions Memo
 - Land Use & Zoning
 - Pedestrian Accommodations
 - Traffic Data/Crash History
 - Traffic Conditions



Relevant Planning Documents

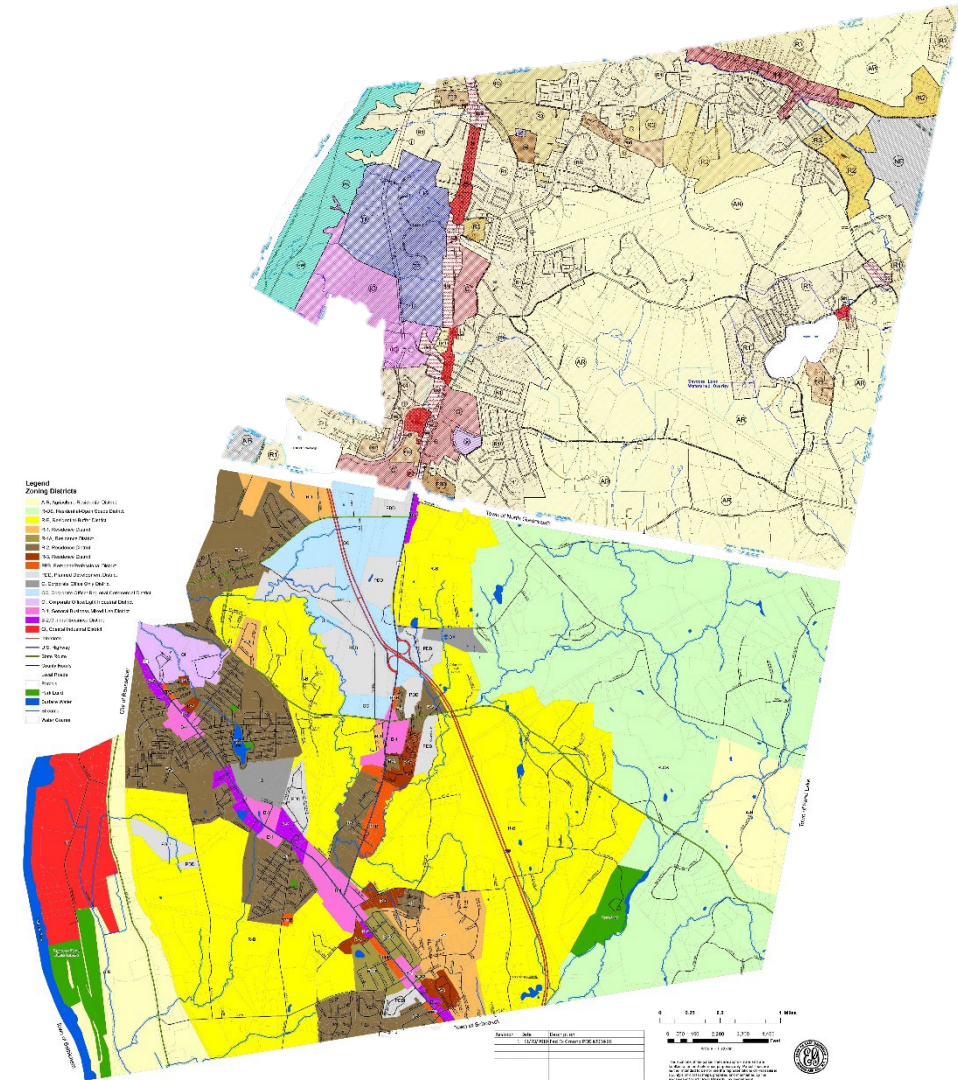
- Route 4 Corridor Study (2006)
- Town of East Greenbush Comprehensive Plan and Appendices (2021)
- Town of East Greenbush Zoning Code (dated 2008; Zoning Update presently in development)
- Western East Greenbush Final Generic Environmental Impact Statement (2009)
- Town of East Greenbush Complete Streets Policy (2019)
- Town of North Greenbush Comprehensive Plan (2009)
- Town of North Greenbush Zoning Code (rev. 2016)
- Town of North Greenbush Route 4 & 1-90 Connector Corridor Land Use Planning Study (2006)
- CDTC's Regional Freight Plan (2016)
- CDTC's Capital District Trails Plan (2018)
- Other completed and planned changes in the Towns'
- Industry best practices and contemporary thought concerning efficient corridor management



Existing Conditions Overview

Land Use versus Zoning

- Land use describes what the land is currently being used for
- Zoning describes the types of land uses that are allowed as established by local zoning laws
- Land use and zoning are a direct reflection of the community character that exists today



Existing Conditions Overview

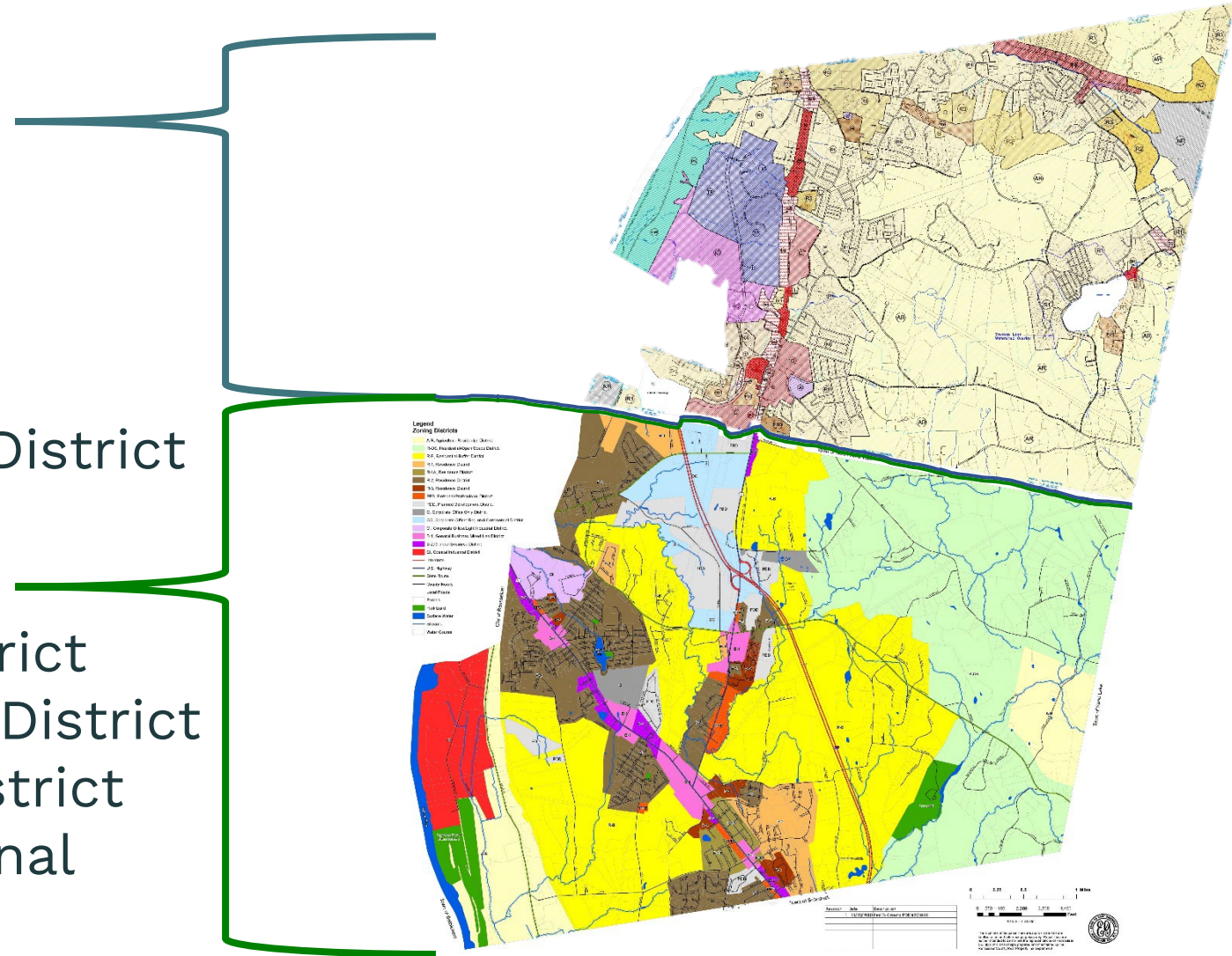
Zoning

North Greenbush

- C, Commercial
- BG, General Business
- BN, Neighborhood Business
- PBD Professional Business
- PDD Planned Development District

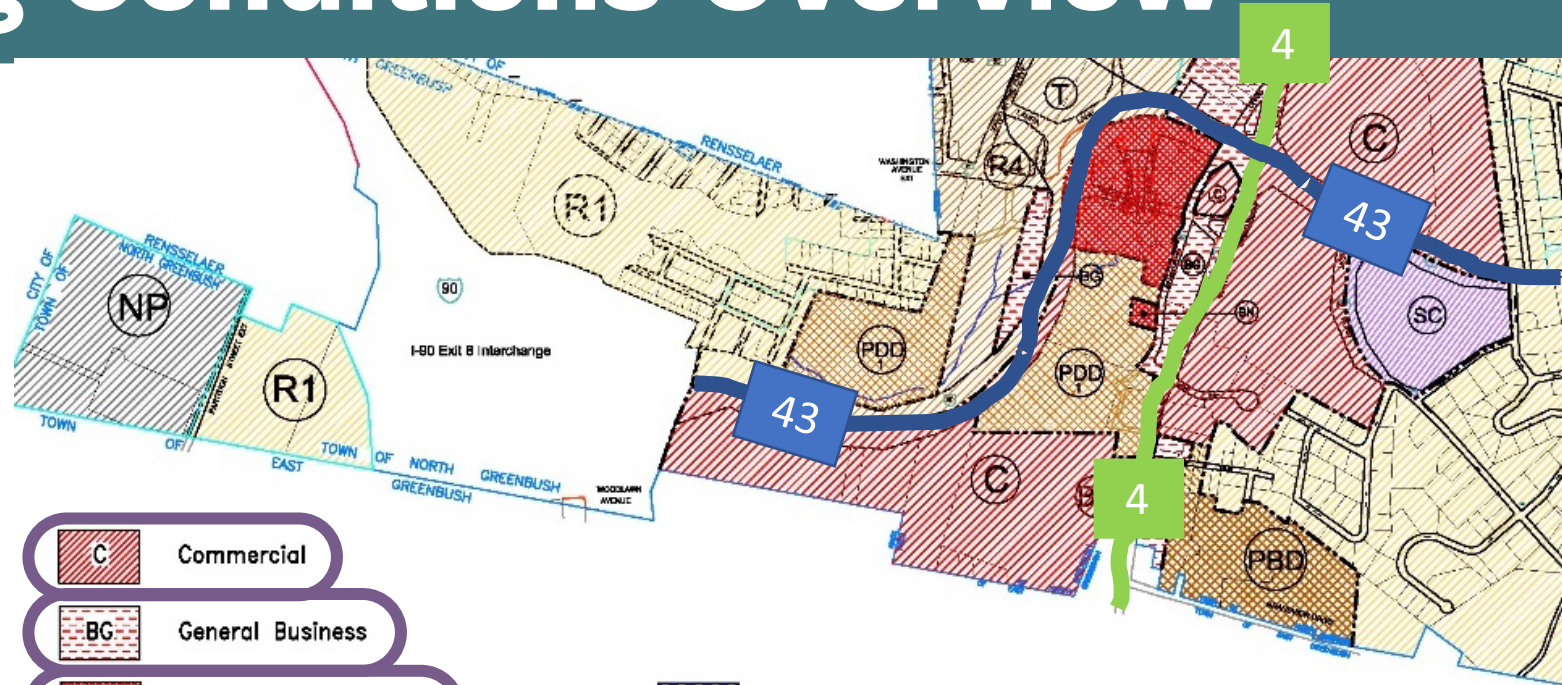
East Greenbush



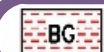









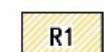


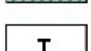


- R-B, Residential-Buffer District
- PDD, Planned Development District
- O, Corporate Office Only District
- OC, Corporate Office/ Regional Commercial District



Existing Conditions Overview

North Greenbush



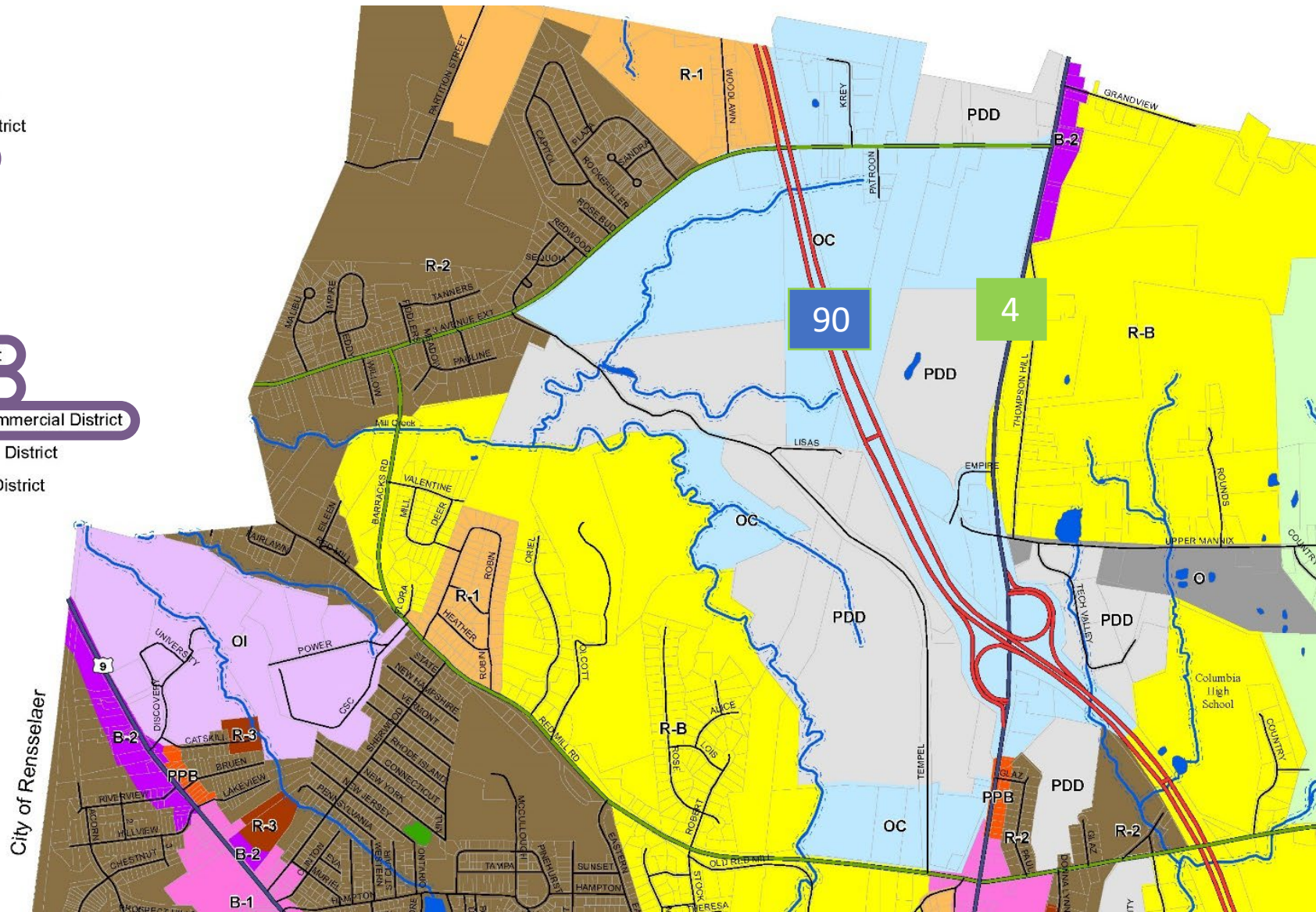
- | | | | |
|---|-----------------------------|---|---|
|  | Commercial |  | Snyders Lake Watershed Overlay District |
|  | General Business |  | Technology Park |
|  | Neighborhood Business |  | Hamlet |
|  | Professional Business |  | Natural Products |
|  | Industrial |  | Planned Development District |
|  | Agricultural Residential |  | Senior Citizen District |
|  | Residential – Single Family |  | Planned Waterfront District |
|  | Residential |  | Transportation Overlay District |
|  | Residential | | |
|  | Residential | | |

Existing Conditions Overview

East Greenbush

Legend Zoning Districts

- A-R, Agriculture-Residential District
- R-OS, Residential-Open Space District
- R-B, Residential-Buffer District
- R-1, Residence District
- R-1A, Residence District
- R-2, Residence District
- R-3, Residence District
- PPB, Personal/Professional District
- PDD, Planned Development District
- O, Corporate Office Only District
- OC, Corporate Office/ Regional Commercial District
- OI, Corporate Office/Light Industrial District
- B-1, General Business Mixed Use District
- B-2, General Business District
- CI, Coastal Industrial District
- Interstate
- U.S. Highway
- State Route
- County Roads
- Local Roads
- Parcels
- Park Land
- Surface Water
- Streams
- Water Course



Existing Conditions Overview

Pedestrian Accommodations

- Sidewalks and Crosswalks
 - Concrete sidewalks are available along parts of Rt 4
 - Striped pedestrian crosswalks are available at various locations
- In general, the study area has limited to no pedestrian amenities, such as benches, trash receptacles, or pedestrian lighting



Sidewalk Available

No Sidewalk Available

Striped Crosswalk Available

Existing Conditions Overview

Corridor - Traffic Data / Crash History

- Most recent five years of available data June 6, 2017 to May 30, 2022
- During this five-year period, 428 crashes were recorded.
- The data received was for the roadway, connecting roads, and intersections along the US Route 4 corridor.

Collision Type Summary	
Collision Category Type	Quantity
Head On	6
Left Turn (Against Other Car)	8
Overtaking	30
Rear End	205
Right Angle	71
Right Turn (Against Other Car)	2
Right Turn (With Other Car)	1
Sideswipe	9
Unknown	1
Other	95
Total	428

Collision Type Summary	
Collision Type	Quantity
Collision with Animal	13
Collision with Bicyclist	1
Collision with Motor Vehicle	394
Collision with Pedestrian	3
Collision with Fixed Object	14
Overtaken	2
Collision with Other	1
Total	428

Crash Severity Summary	
Crash Severity Type	Quantity
Property Damage	335
Injury	93
Fatality	0
Total	428

Existing Conditions Overview

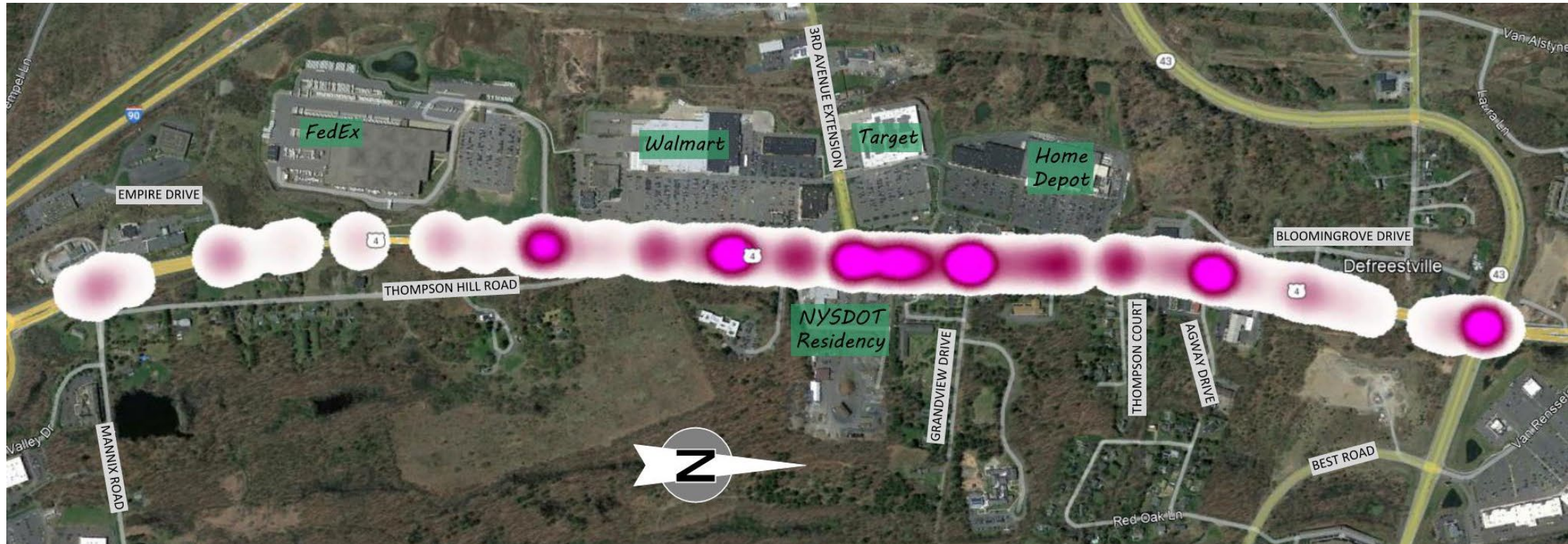
Traffic Data / Crash History

LEGEND

Sparse



Dense



Existing Conditions Overview

Corridor - Intersections

- Most recent five years of available data June 6, 2017 to May 30, 2022
- During this five-year period, **237 of 428** crashes occurred at intersections.

Collision Type Summary	
Intersecting Roadway	Quantity
Mannix Road	2
Empire Drive	4
Thompson Hill Road	11
North Greenbush Square & Rensselaer County Plaza (Walmart Plaza)	73
3 rd Avenue Extension	49
Grandview Drive & Greenbush Commons (Home Depot/Target Plaza)	24
Thompson Court	10
Bloomingrove Drive & Agway Drive (Stewart's/CVS)	27
NY Route 43	37
Total	237

Existing Conditions Overview

Traffic Volumes

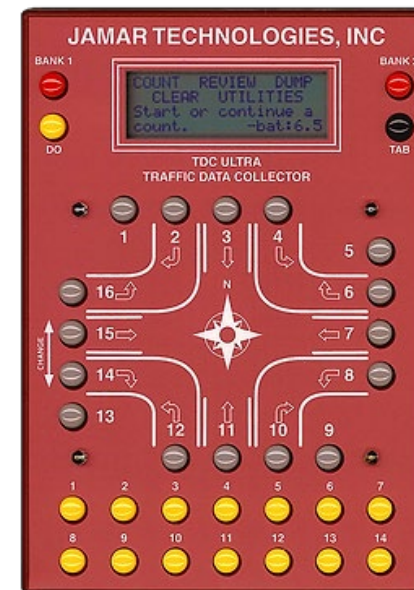
- Traffic volumes were collected using Automatic Traffic Recorders (ATRs) and turning movement counts (TMCs)
- Two ATRs collect 24-hour traffic volumes
 - ❖ Three days between Tuesday April 5 to Thursday April 7, 2022
 - ❖ Obtain Average annual daily traffic (AADT)
- The locations of the ATRs:
 - ❖ Between I-90 Exit 9 and 3rd Ave. Ext.
 - ❖ AADT = 15,304
 - ❖ Between 3rd Ave. Ext. NY Route 43
 - ❖ AADT = 18,917



Existing Conditions Overview

Traffic Volumes continued

- TMCs collected at five (5) intersections
 1. NY Route 43
 2. Bloomingrove Drive and Agway Drive
 3. Grandview Drive/Home Depot Plaza
 4. 3rd Avenue Extension
 5. Rensselaer County Plaza Driveway
- Midday – 11:30 am – 1:00 pm
- PM – 3:00 – 5:00 pm
- Intersections 1, 2, 3, and 5
 - ❖ TMCs on Tuesday, May 24, 2022
- Intersection 4
 - ❖ TMCs on Wednesday, June 1, 2022



Existing Conditions Overview

Existing Traffic Conditions

1. NY Route 43
2. Bloomingrove Drive and Agway Drive
3. Grandview Drive
4. 3rd Avenue Extension
5. Rensselaer County Plaza Driveway (Walmart)

Level of Service (LOS)

- Measure of the flow of traffic
- Letter grade system
 - A = Best
 - F = Worst

Overall Intersection LOS	
Location	2022 Study (MIDDAY / PM Peak)
NY Route 43	D (51.2) / E (69.4)
Bloomingrove Drive and Agway Drive	D (39.5) / E (40.5)
Grandview Drive	E (62.6) / D (44.5)
3rd Avenue Extension	D (51.2) / C (27.9)
Rensselaer County Plaza Driveway (Walmart)	C (23.1) / B (14.3)

Existing Conditions Overview

Existing Traffic Conditions



Agenda

- 1. Welcome and Introductions**
- 2. Project and Schedule Overview**
- 3. Existing Conditions Overview**
- 4. Mini-Visioning Session**
- 5. Next Steps**



[Mini-Visioning Session]

- Go to **pollev.com/mjplanning518**
or
- Text **MJPlanning518** to **37607**
or
- Scan the QR code with a smart device



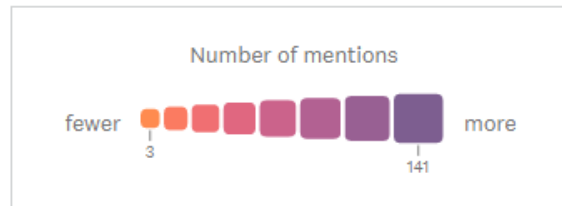
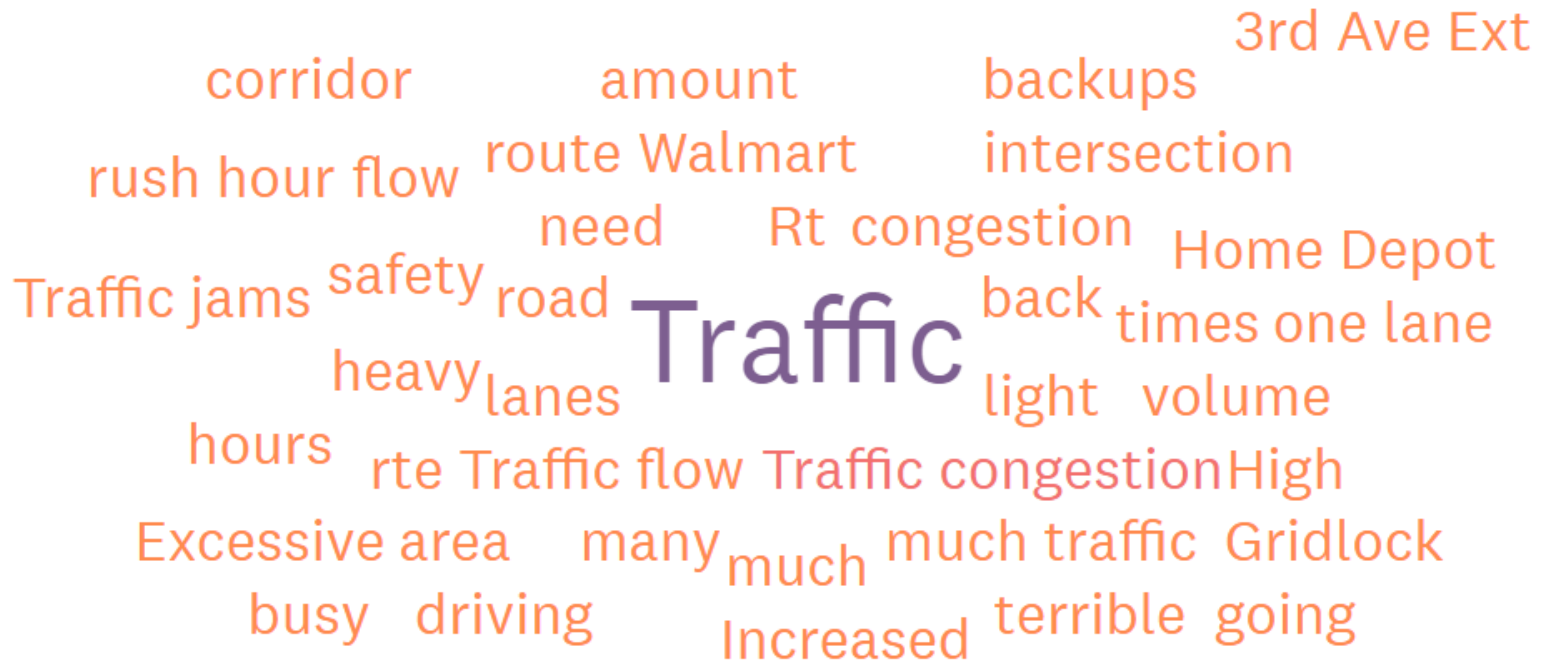
Describe what you like best about the corridor in 1-2 words.

Response	Via
Not albany	pollev.com/mjplanning518
Retail	Text (US)
Access to I-90	pollev.com/mjplanning518
Shopping	pollev.com/mjplanning518
My vet is here	pollev.com/mjplanning518
Social opportunities	pollev.com/mjplanning518
Direct connections	pollev.com/mjplanning518
Shopping	pollev.com/mjplanning518
Handy	pollev.com/mjplanning518
Trees	pollev.com/mjplanning518
Retail options	pollev.com/mjplanning518
Businesses	pollev.com/mjplanning518
Fish Fry	pollev.com/mjplanning518
Local jobs	pollev.com/mjplanning518
Shopping	pollev.com/mjplanning518
Things to do	pollev.com/mjplanning518
No Traffic! (Midnight to 6AM)	pollev.com/mjplanning518
Restaurants	pollev.com/mjplanning518
Roundabouts	pollev.com/mjplanning518
Always plowed	pollev.com/mjplanning518
Amenities	pollev.com/mjplanning518
Getting off it	pollev.com/mjplanning518
Shopping variety	pollev.com/mjplanning518
retail options	pollev.com/mjplanning518
Services	pollev.com/mjplanning518
Shopping!	pollev.com/mjplanning518
Close to home	pollev.com/mjplanning518
Shopping	pollev.com/mjplanning518
Connects the two towns	pollev.com/mjplanning518
Convenience	pollev.com/mjplanning518
Highway access	pollev.com/mjplanning518
Easy drive- not curvy or hilly	pollev.com/mjplanning518
Wide lanes	pollev.com/mjplanning518
Access to interstates	pollev.com/mjplanning518
Shopping	pollev.com/mjplanning518
Convenience to shopping	pollev.com/mjplanning518
Convenient stores	pollev.com/mjplanning518
Potential	pollev.com/mjplanning518
Shopping	pollev.com/mjplanning518
Retail Options	pollev.com/mjplanning518
Traffic Circle	pollev.com/mjplanning518
Nothing. Traffic is a nightmare. Hoosick Road all over again. A gen	pollev.com/mjplanning518
Convenience	pollev.com/mjplanning518
OK When traffic is light	pollev.com/mjplanning518
Shopping and access to I-90	pollev.com/mjplanning518
Accessibility	Text (US)
Convenience	pollev.com/mjplanning518
One-stop shopping	pollev.com/mjplanning518
Shopping	pollev.com/mjplanning518
Shopping	pollev.com/mjplanning518
Turning lane	pollev.com/mjplanning518
New businesses	pollev.com/mjplanning518
Stores	pollev.com/mjplanning518
view	pollev.com/mjplanning518
View	pollev.com/mjplanning518
Nice access to a number of businesses	pollev.com/mjplanning518
Commercial options	pollev.com/mjplanning518
Sales tax	pollev.com/mjplanning518
Shopping Variety	pollev.com/mjplanning518
Nothing	pollev.com/mjplanning518
Shopping	pollev.com/mjplanning518
Convenient shopping	pollev.com/mjplanning518
Proximity to interstate	pollev.com/mjplanning518
Not much	pollev.com/mjplanning518
Close to everything!	pollev.com/mjplanning518
Nothing	pollev.com/mjplanning518
Needs work	pollev.com/mjplanning518
Access	pollev.com/mjplanning518
Convenience	pollev.com/mjplanning518
Businesses	pollev.com/mjplanning518
Not much	pollev.com/mjplanning518
Nothing	pollev.com/mjplanning518
Shopping options	pollev.com/mjplanning518
Nothing	pollev.com/mjplanning518
Store variety	pollev.com/mjplanning518
Nothing at-all	pollev.com/mjplanning518
Nothing	pollev.com/mjplanning518
Retail services	pollev.com/mjplanning518
Nothing	pollev.com/mjplanning518
Nothing	pollev.com/mjplanning518
The view.	pollev.com/mjplanning518
Nothing	pollev.com/mjplanning518
Nothing	pollev.com/mjplanning518

Describe the biggest challenge(s) or issue(s) within the corridor in 1-2 words.

Community Survey Question 19:

Please identify the top 2 concerns or challenges to the study area.



What would you like to see changed on the corridor in the future?

Response	Via
Parallel roads to reduce traffic	pollev.com/mjplanning518
A lot	pollev.com/mjplanning518
Turning lanes!	Text (US)
Repeat the questions from audience please	Text (US)
Multi-use paths	pollev.com/mjplanning518
Predictability	pollev.com/mjplanning518
End to end sidewalks	pollev.com/mjplanning518
Left turn from 3rd Ave to Rt 4	pollev.com/mjplanning518
Left turn signals	Text (US)
Add bus	pollev.com/mjplanning518
Architectural guidelines for new development	pollev.com/mjplanning518
Sidewalks	pollev.com/mjplanning518
Left turn signals	Text (US)
Lower speed	pollev.com/mjplanning518
Better link to HVCC	pollev.com/mjplanning518
Left turn signals	Text (US)
Turning lanes w turning lights	pollev.com/mjplanning518
Left turn signals	Text (US)
Left turn signals	Text (US)
Keeping green trees in Greenbush	pollev.com/mjplanning518
Left turn signals	Text (US)
More lanes	pollev.com/mjplanning518
Per bike connections	pollev.com/mjplanning518
Lower speed limits	pollev.com/mjplanning518
Traffic lights	pollev.com/mjplanning518
Signal timing	pollev.com/mjplanning518
Left turn signals	Text (US)
Bike lane	pollev.com/mjplanning518
Signal progression	pollev.com/mjplanning518
Safety	pollev.com/mjplanning518
Fewer distractions to drivers	pollev.com/mjplanning518
Roundabout at 4/43 interchange	pollev.com/mjplanning518
Second lane	pollev.com/mjplanning518
Bus stops	pollev.com/mjplanning518
Roundabout or parallel corridor or both!	pollev.com/mjplanning518
No driving in turn lanes	pollev.com/mjplanning518
Not a one lane northbound	pollev.com/mjplanning518
Bypass	pollev.com/mjplanning518
More trees	pollev.com/mjplanning518
Keep traffic on corridor	pollev.com/mjplanning518
Additional lanes	pollev.com/mjplanning518
Benches	pollev.com/mjplanning518
Service roads	pollev.com/mjplanning518
Left turn signals	Text (US)
Add more lanes	pollev.com/mjplanning518
Dangerous	pollev.com/mjplanning518

Shared use trails	pollev.com/mjplanning518
More lanes	pollev.com/mjplanning518
Widened lanes or added lanes	pollev.com/mjplanning518
Bus service between EG and Troy	pollev.com/mjplanning518
Multi modal	pollev.com/mjplanning518
Bike lane	pollev.com/mjplanning518
More lanes	pollev.com/mjplanning518
More lanes	pollev.com/mjplanning518
Another lane	pollev.com/mjplanning518
Left turn signals	Text (US)
Parallel corridor	pollev.com/mjplanning518
Roundabout at 3rd Ave and Rt 4, more sidewalks	pollev.com/mjplanning518
Bus needed	pollev.com/mjplanning518
More lanes	pollev.com/mjplanning518
Add more lanes	pollev.com/mjplanning518
Reroute riad	pollev.com/mjplanning518
Parallel corridor	pollev.com/mjplanning518
Better bus service	pollev.com/mjplanning518
More sidewalks and crosswalks	pollev.com/mjplanning518
3rd Ave Roundabout	pollev.com/mjplanning518
Fix intersections	pollev.com/mjplanning518
Better light timing	pollev.com/mjplanning518
Remove lanes	pollev.com/mjplanning518
How to navigate a roundabout	pollev.com/mjplanning518
Only one entrance into Walmart	pollev.com/mjplanning518
Pedestrian bridges (over road)	Text (US)
Speed enforcement	pollev.com/mjplanning518
Better turning	pollev.com/mjplanning518
Ability to walk dog	pollev.com/mjplanning518
Turn signals	Text (US)
More Lanes	pollev.com/mjplanning518
More pedestrian friendly	pollev.com/mjplanning518
Protected bike lane	pollev.com/mjplanning518
Improve traffic flow	pollev.com/mjplanning518
Expand bus service	pollev.com/mjplanning518
Walkable	pollev.com/mjplanning518
Increase traffic capacity	pollev.com/mjplanning518
Better transit buses	pollev.com/mjplanning518
Safer	pollev.com/mjplanning518
Bus service	pollev.com/mjplanning518
More biking lanes and sidewalks	pollev.com/mjplanning518
Roundabouts	pollev.com/mjplanning518
Law enforcement	pollev.com/mjplanning518
Roundabouts	pollev.com/mjplanning518
Wider road	pollev.com/mjplanning518
Wildlife corridor bike friendly	pollev.com/mjplanning518
Less congestion	pollev.com/mjplanning518

5 lanes	pollev.com/mjplanning518
Dedicated bike lane	pollev.com/mjplanning518
Sidewalks	pollev.com/mjplanning518
Limit expansion	pollev.com/mjplanning518
Sidewalks	pollev.com/mjplanning518
widen road	pollev.com/mjplanning518
Sidewalks	pollev.com/mjplanning518
Boulevard	pollev.com/mjplanning518
Add bike lanes, add level crossings	pollev.com/mjplanning518
Alternate Road	pollev.com/mjplanning518
Sidewalks	pollev.com/mjplanning518
Safety	pollev.com/mjplanning518
More roundabout	pollev.com/mjplanning518
Turning lanes	pollev.com/mjplanning518
Safety	pollev.com/mjplanning518
Safety	pollev.com/mjplanning518
Sidewalk	pollev.com/mjplanning518
Turn signals	Text (US)
Signal timing	pollev.com/mjplanning518
Second lane NB	pollev.com/mjplanning518
Less development	pollev.com/mjplanning518
Sidewalks	pollev.com/mjplanning518
better flow	pollev.com/mjplanning518
North bound traffic flow	pollev.com/mjplanning518
Sidewalks	pollev.com/mjplanning518
More roundabouts	pollev.com/mjplanning518
Add more lanes	pollev.com/mjplanning518
Alternate connections	pollev.com/mjplanning518
Bike ped	pollev.com/mjplanning518
Traffic	pollev.com/mjplanning518
Add bus	pollev.com/mjplanning518
LessTraffic	pollev.com/mjplanning518
Parallel corridor	pollev.com/mjplanning518

Agenda

- 1. Welcome and Introductions**
- 2. Project and Schedule Overview**
- 3. Existing Conditions Overview**
- 4. Mini-Visioning Session**
- 5. Next Steps**



Next Steps

- Outstanding Data Collection
- Future Operational Analysis
- Survey Summary - TBA
 - (700+ Responses)
- Stakeholder Meetings
- Public Workshop #2 – TBA





Thank you!

**Comments
or
Questions?**

**Project website
www.nyroute4study.com**

Q & A “How To”

- **To ask a question live, use the “Raise Hand” feature**
 - If on a telephone:
 - *9 to raise hand
 - *6 to mute/unmute
- **OR submit your questions through the Q&A!**



- Following the meeting, written comments can be submitted on: **nyroute4study.com**
- A recording of the meeting will be posted on the Project page at **nyroute4study.com/meetings**